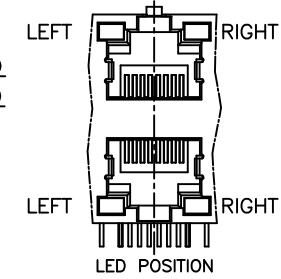
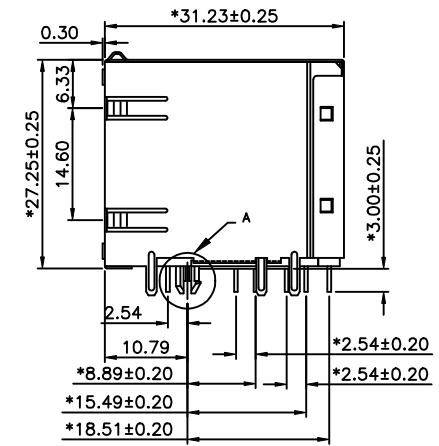
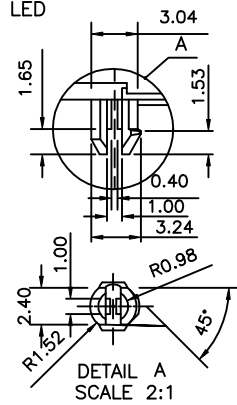
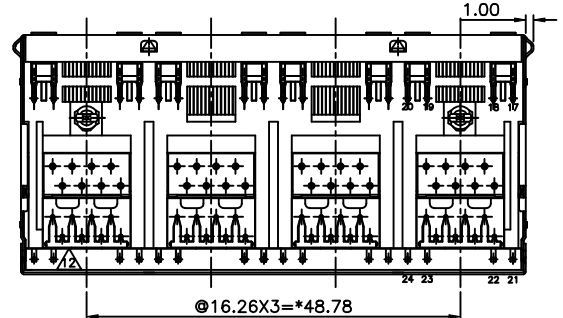
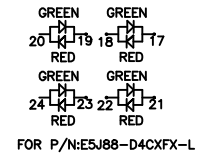
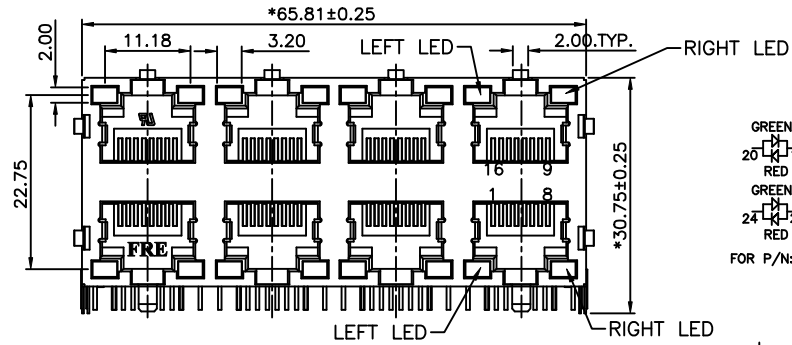


REVISION RECORD				
REV	ECO	DESCRIPTION	DRFT	CHKD



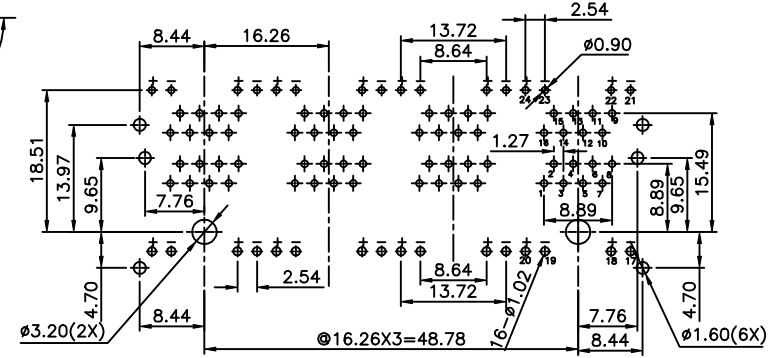
- NOTES:**
- ELECTRICAL:**
- VOLTAGE RATING : 125 VAC RMS.
  - CURRENT RATING : 1.5 AMP.
  - CONTACT RESISTANCE : 50 MILLIOHMS MAX.
  - INSULATION RESISTANCE: 1000 MEGOHMS MIN @ 500 VDC.
  - DIELECTRIC STRENGTH : 1000 VAC RMS 60Hz, 1MIN.
- MECHANICAL:**
- HOUSING MATERIAL : GLASS FILLED POLYESTER UL94V-0.
  - CONTACT MATERIAL : PHOSPHOR BRONZE  $\phi 0.46$ mm.
  - PLATING : 1: CONTACT AREA- SELECTIVE GOLD PLATING.  
2: TAILS- 150u" TIN-LEAD MIN OVER 50u" NICKEL OR TIN OVER NICKEL.
- OPERATING LIFE : 750 CYCLES MIN.
  - PCB RETENTION PRE-SOLDER : 1 LB MIN.
  - PCB RETENTION POST-SOLDER: 10 LBS MIN.
  - LED COLOR : GREEN
- ENVIRONMENTAL:**
- STORAGE : -40°C TO +85°C.
  - OPERATION: -40°C TO +85°C.
  - WAVE SOLDERING TEMPERATURE: 230~250°C(3~5 SECONDS)
- MATES WITH MODULAR PLUG CONFORMING TO FCC PART 68, SUBPART F.

ROHS PART NUMBER: E5J88-X4CXFX-L

A-LEFT LED:GREEN, RIGHT LED:GREEN  
 B-LEFT LED:GREEN, RIGHT LED:ORANGE  
 C-LEFT LED:GREEN, RIGHT LED:YELLOW  
 L-LEFT LED:YELLOW, RIGHT LED:GREEN  
 F-LEFT LED:ORANGE, RIGHT LED:GREEN  
 D-LEFT LED:G+R, RIGHT LED:G+R

Gold Thickness:  
 1- 3u" 2- 6u" 3-15u"  
 4-30u" 5-50u"

0- W/O "FRE" LOGO  
 2- W/ "FRE" LOGO



PC Board Layout  
Component Side Shown

DETACHED LISTS	← MM (INCH) →		DFTO YANGLAN	DATE 10/18/05'	FULL RISE ELECTRONIC CO., LTD	
	TOLERANCES EXCEPT AS NOTED		CHKD: JHE	DATE 2005/10/18		
	MM	±	MFO	DATE	TITLE RJ45(LED) STACKED GANGED JACK, 2X4	
	.0 ±0.20	±	APPLV: LSH: JHE	DATE 2005/10/18		
	.00 ±0.15	±	MATERIAL :		DRAWING NO. GE5J3001-LC	
.000 ±0.075	±	FINISH :		/PART NO. SEE NOTE		
ANGLES ±		SCALE : 5:3		SHEET 1 OF 1		
THIRD ANGLE PROJECTION				REV 0 10/17/05'		